



**CARISOPRODOL AND MEPROBAMATE WHOLE BLOOD,
SERUM/ PLASMA, URINE AND TISSUE SAMPLES.**

LC-MSMS CONFIRMATIONS USING:

200 mg CLEAN SCREEN[®] DAU EXTRACTION COLUMN

Part #: ZSDAU020

1. PREPARE SAMPLE:

To 1 mL of 100 mM phosphate buffer (pH 6) add internal standards.*

Add 1 mL of whole blood, serum/ plasma, urine or 1 g of tissue sample (1: 4 homogenate).

Vortex mix.

Add 2 mL of 100 mM phosphate buffer (pH 6) and vortex mix.

Centrifuge as appropriate.

2. CONDITION COLUMN:

1 x 3 mL CH₃OH

1 x 3 mL D.I. H₂O

1 x 3 mL 100 mM phosphate buffer (pH 6)

Note: aspirate at < 3 inches Hg to prevent sorbent drying out

3. APPLY SAMPLE:

Load sample at 1-2 mL / minute

4. WASH COLUMN:

1 x 3 mL D.I. H₂O

1 x 3 mL 100 mM hydrochloric acid

Dry column (10 minutes at > 10 inches Hg)

1 x 3 mL hexane

5. ELUTE CARISOPRODOL / MEPROBAMATE:

1 x 3 mL ethyl acetate: hexane (50:50)

Collect eluate at 1-2 mL /minute

6. EVAPORATION:

Evaporate eluates under a gentle stream of nitrogen < 40°

Dissolve residue in 50 µL CH₃OH

INSTRUMENT CONDITIONS:

Column: 100 x 2.1 mm (3 µm) Selectra[®] Phenyl (UCT, LLC)

Mobile phase:	<u>Time</u>	<u>Acetonitrile</u>	<u>0.1% Formic Acid aq</u>
	0	10	90
	15	50	50
	16	10	90
	20	10	90

Flowrate: 0.35 mL/ minute

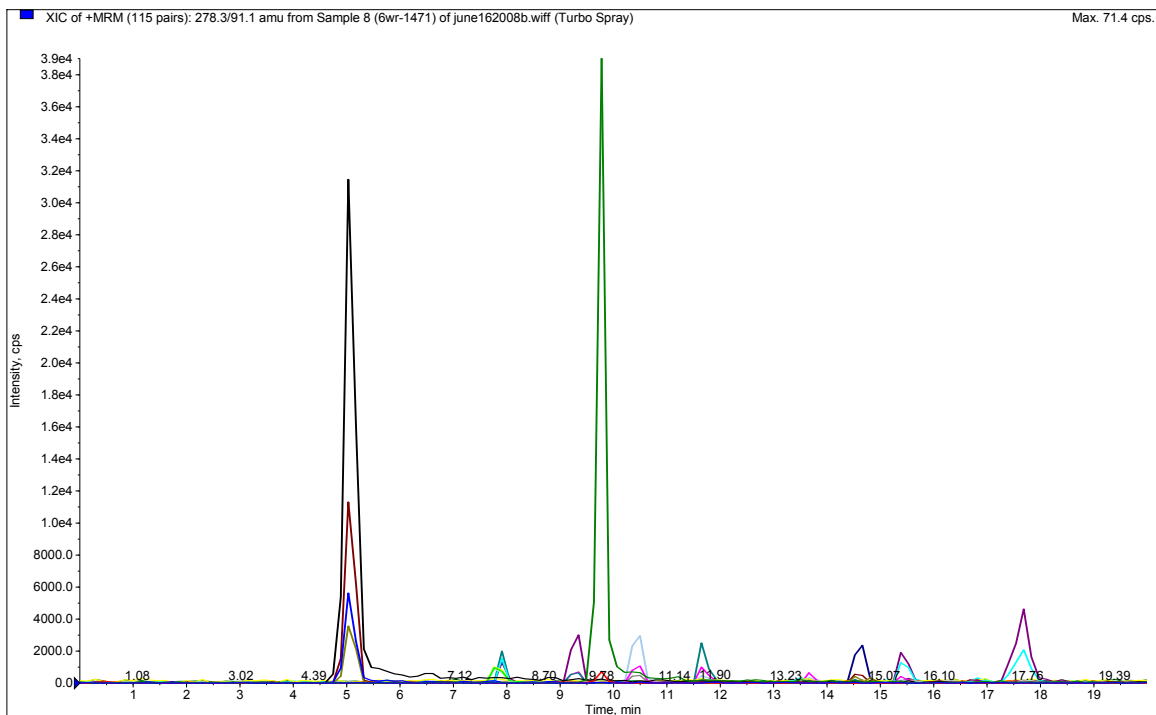
Injection Volume: 5 µL

Column Temperature: ambient

Detector: API 2000 MS/MS

<u>Compound</u>	<u>MRM Transition</u>	<u>Cerilliant #</u>
Carisoprodol	261.2/ 176.1	C-077
Meprobamate	219.1/158.2	M-039
*Meprobamate-D7		M-131

CHROMATOGRAM OF: Meprobamate, Carisoprodol 10 ng/ mL (L to R)



Recovery: > 90% (N=20)

LOD: 10 ng/ mL

DCN-909030-138