



**ETHYLGLUCURONIDE (ETG) AND ETHYL SULFATE (ETS) IN
HAIR FOR LC-MSMS CONFIRMATIONS USING:
200 MG CLEAN SCREEN[®] EXTRACTION COLUMN
PART #: CSETG203**

April 25, 2011

1. PREPARE SAMPLE

Into a clean glass tube add approx. 50-100 mg of decontaminated hair.

Add 1 mL of DI H₂O, add internal standards*

Vortex mix

Incubate at 40 °C for 12 hours

Centrifuge as appropriate

2. CONDITION CLEAN SCREEN[®] EXTRACTION COLUMN

1 x 3 mL CH₃OH containing 1% Formic acid

1 x 3 mL DI H₂O containing 1% Formic acid

Note: aspirate at < 3 inches Hg to prevent sorbent drying out

3. APPLY SAMPLE:

Load sample at 1-2 mL / minute

4. WASH COLUMN:

1 x 3 mL DI H₂O

Dry column (10 minutes at > 10 inches Hg)

5. ELUTE ETG/ETS:

2 x 3 mL CH₃OH containing 1% Formic acid

Collect eluate at 1-2 mL /minute

6. EVAPORATION:

Evaporate eluate under a gentle stream of nitrogen < 40°C. Dissolve the residue in 100 µL of mobile phase. Inject 20 µL

INSTRUMENT CONDITIONS:

Column: 150 x 2.1 mm (4 µm) Diamond Hydride (MicroSolv)

Mobile phase:

<u>Time/ min</u>	<u>% Acetonitrile</u>	<u>% 0.1 % Formic Acid</u>
0	95	5
5	95	5

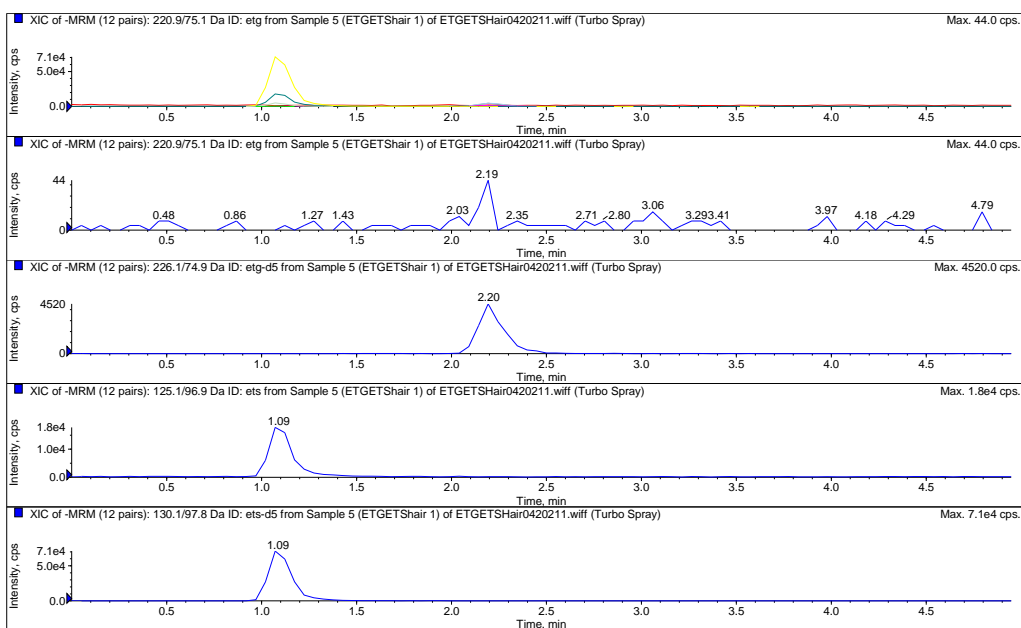
Flowrate: 0.4 mL/minute

Column Temperature: 50°C

Detector: API 4000 QTRAP MS/MS

<u>Compound</u>	<u>(-) MRM Transition</u>	<u>Lipomed #</u>
ETG	221.0/75.0	EGL-332
*ETG-D5	226.1/74.9	EGL-780
ETS	125.1/76.9	ETS-972
*ETS-D5	130.0/97.8	ETS-979

Chromatogram of ETG/ETS extracted from decontaminated hair



DCN-115240-217