



**PSILOCIN IN BLOOD, PLASMA/SERUM, URINE USING:
200 mg STYRE SCREEN[®] EXTRACTION COLUMN**

Part #: SSDBX206

LC/MS/MS

July 30, 2009

1. PREPARE SAMPLE:

To 1 mL of 100 mM phosphate buffer (pH 6) add internal standard.*

Add 1 mL of whole blood, serum/ plasma, or urine and vortex mix.

Add 3 mL of 100 mM phosphate buffer (pH 6).

Vortex and centrifuge as appropriate.

2. CONDITION COLUMN:

Not required for this SPE

3. APPLY SAMPLE:

Load sample at 1-2 mL / minute.

4. WASH COLUMN:

1 x 3 mL DI H₂O

1 x 3 mL 100 mM acetic acid

1 x 3 mL CH₃OH

Dry column (5 minutes at > 10 inches Hg).

5. ELUTE PSILOCIN:

1 x 3 mL ethyl acetate; acetonitrile: ammonia (78: 20: 2 v/v)

Or

1 x 3 mL CH₂Cl₂/ IPA/ ammonia (78:20:2 v/v)

Collect eluate at 1-2 mL /minute.

6. EVAPORATION:

Evaporate eluates to dryness under a gentle stream of nitrogen.

7. RECONSTITUTE sample in 50 µL of CH₃OH.

Inject 5 µL.

INSTRUMENT CONDITIONS:

Column: 50 x 2.1 mm (3 µm) SELECTRA[®] Phenyl (UCT, LLC)

MOBILE PHASE:

| <u>Time</u> | <u>% Acetonitrile (0.1% Formic acid)</u> | <u>%0.1% Formic acid</u> |
|-------------|--|--------------------------|
| 0 | 80 | 20 |
| 5 | 80 | 20 |

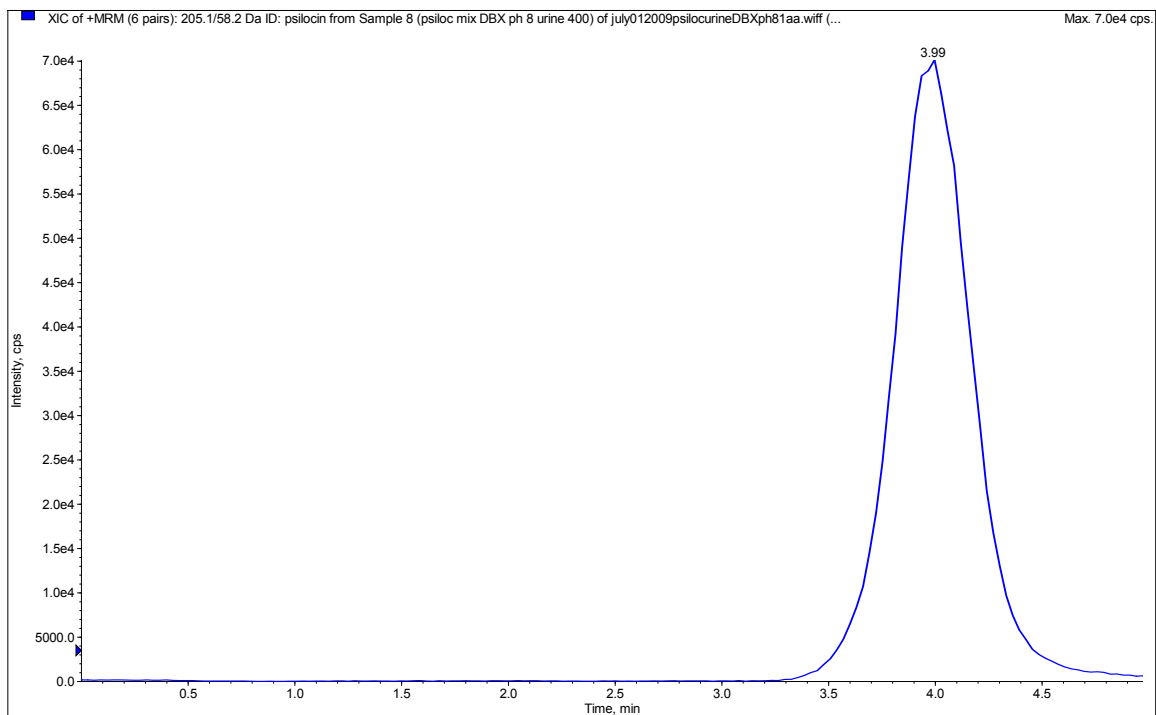
Flowrate: 0.3 mL/ minute

Column : 40 °C

Detector: API 3200 QTrap MS/MS

| <u>Compound</u> | <u>MRM Transition</u> |
|-----------------|-----------------------|
| Psilocin | 205.2/58.2 |
| *Psilocin-D10 | 215.2/68.2 |

CHROMATOGRAM SHOWING: PSILOCIN



Recovery: > 90% (n=10)

LOD: 10 ng/ mL

DCN-900370-170