



**THC, HYDROXY-THC, AND THC-COOH IN WHOLE BLOOD.
LC MSMS CONFIRMATIONS USING:
200 mg CECEC30 EXTRACTION COLUMN
Part Number: CEC30126**

1. Prepare Sample:

To 1 mL of whole blood add internal standards.*

Vortex and allow to stand for approximately 10 minutes.

Add 1 mL of ice cold acetonitrile (dropwise) whilst mixing.

Continue to vortex mix for approximately 1 minute.

Centrifuge and transfer acetonitrile to clean tube.

Add 5 mL of 100 mM hydrochloric acid.

2. Condition Column:

1 x 3 mL CH₃OH

1 x 3 mL D.I. H₂O

1 x 3 mL 100 mM hydrochloric acid.

Note: aspirate at < 3 inches Hg to prevent sorbent drying out.

3. Apply Sample:

Load sample at 1-2 mL / minute.

4. Wash Column:

1 x 3 mL D.I. H₂O

1 x 3 mL 100 mM hydrochloric acid

Dry column (10 minutes at > 10 inches Hg).

5. Elute THC, THC-OH, THC-COOH:

1 x 3 mL ethyl acetate: hexane acetic acid (25: 75:1)

Collect eluate at 1-2 mL /minute.

6. Evaporation:

Evaporate eluates under a gentle stream of nitrogen < 40°.

Dissolve residue in 50 µL CH₃OH.

Instrument Conditions:

Column: 50 x 2.1 mm (3 µm) Selectra™ Phenyl (UCT, Inc.,)

Mobile phase:	Time	Acetonitrile	0.1% Formic Acid aq
	0	50	50
	10	90	10
	11	50	50
	15	50	50

Flowrate: 0.35 mL/ minute

Injection Volume: 5 µL

Column Temperature: ambient

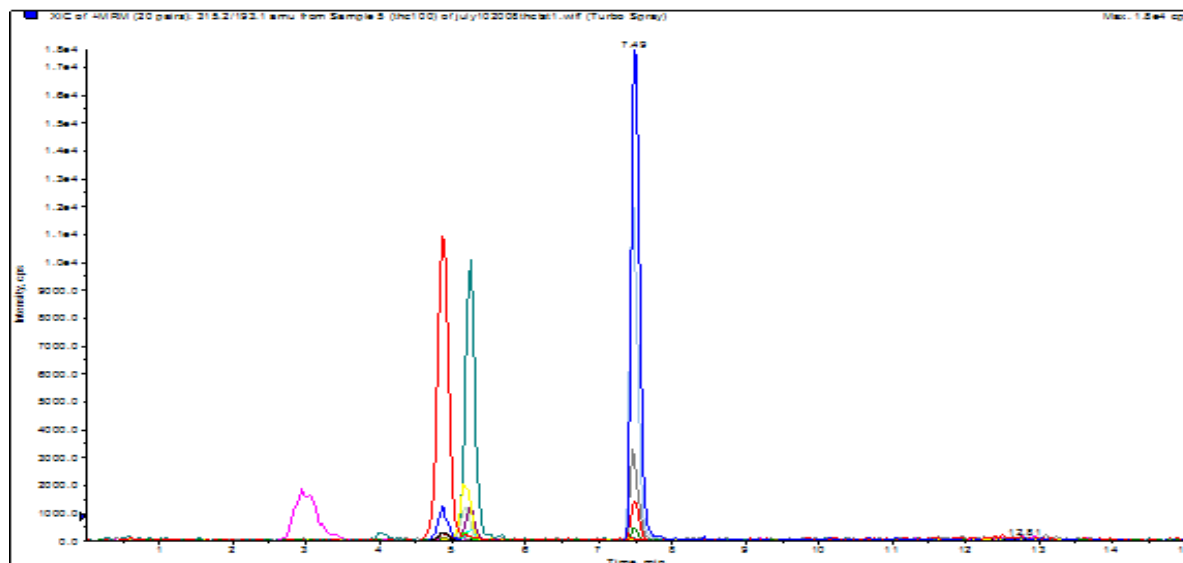
Detector: API 2000 MS/MS.

Compound	MRM Transition	Cerilliant #
THC	315.2/193.1	T-005
*THC-D3	318.0/196.1	T-003
THC-OH	330.9/313.2	H-027
*THC-OH-D3	334.0/316.2	H-041
THC-COOH	344.9/327.1	T-018
*THC-COOH-D9	354.0/336.1	T-007
Negative Mode:		
THC-COOH	343.1/299.1	T-018
*THC-COOH-D3	343.1/302.1	T-004
*THC-COOH-D9	352.2/308.2	T-007

Chromatogram of : THC-OH/ THC-OH D3

THC-COOH/ THC-COOH D9

THC/ THC D3



Recovery: > 90% (N=20)

LOD: 0.5 ng/ mL